

2:1 Input Range 2A5DI Series

5Watt DIP24 Package Single Output, 1.6kVDC Isolation, Operating Temp. -40to+95°C

型名	入力電圧(V) (入力電圧幅 V)	出力電圧(V)	出力電流(mA)	効率(%)	負荷変動率	リップルノイズ
2A5DI-053.3	5 (4.5-9)	3.3	1000	70-78	±0.6% Typ	50mVp-p max
2A5DI-0505		5	1000	76-82		
2A5DI-0509		9	556	76-84		
2A5DI-0512		12	420	76-85		
2A5DI-0515		15	340	77-85		
2A5DI-123.3	12 (9-18)	3.3	1000	70-78		
2A5DI-1205		5	1000	76-82		
2A5DI-1209		9	556	76-84		
2A5DI-1212		12	420	76-85		
2A5DI-1215		15	340	77-85		
2A5DI-243.3	24 (18-36)	3.3	1000	70-78		
2A5DI-2405		5	1000	76-82		
2A5DI-2409		9	556	76-84		
2A5DI-2412		12	420	76-85		
2A5DI-2415		15	340	77-85		
2A5DI-483.3	48 (36-72)	3.3	1000	70-78		
2A5DI-4805		5	1000	76-82		
2A5DI-4809		9	556	76-84		
2A5DI-4812		12	420	76-85		
2A5DI-4815		15	340	77-85		

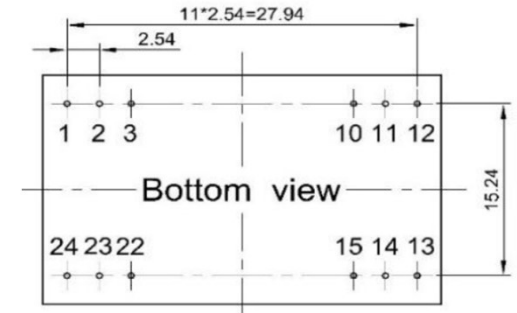
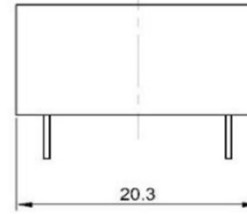
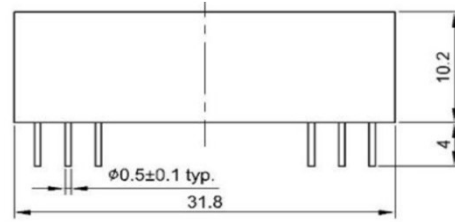
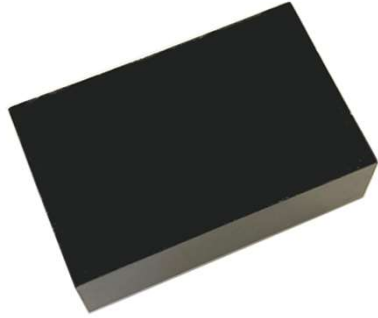
2:1 Input Range 2A5DI Series

5Watt DIP24 Package Dual Output, 1.6kVDC Isolation, Operating Temp. -40to+95°C

型名	入力電圧(V) (入力電圧幅 V)	出力電圧(V)	出力電流(mA)	効率(%)	負荷変動率	リップルノイズ
2A5DI-0505D	5 (4.5-9)	±5	±500	76-81	±0.6% Typ	50mVp-p max
2A5DI-0509D		±9	±278	76-84		
2A5DI-0512D		±12	±210	76-84		
2A5DI-0515D		±15	±170	77-85		
2A5DI-1205D	12 (9-18)	±5	±500	76-81		
2A5DI-1209D		±9	±278	76-84		
2A5DI-1212D		±12	±210	76-84		
2A5DI-1215D		±15	±170	77-85		
2A5DI-2405D	24 (18-36)	±5	±500	76-81		
2A5DI-2409D		±9	±278	76-84		
2A5DI-2412D		±12	±210	76-84		
2A5DI-2415D		±15	±170	77-85		
2A5DI-4805D	48 (36-72)	±5	±500	76-81		
2A5DI-4809D		±9	±278	76-84		
2A5DI-4812D		±12	±210	76-84		
2A5DI-4815D		±15	±170	77-85		

2:1 Input Range 2A5DI Series

5Watt DIP24 Package Single/Dual Output



ピン配置:B Pinning

Pin	1	2	3	4	5	6	7	8	9	10	11	12
Single	+Vin	NC	NC	No pin	No pin	No pin	No pin	No pin	No pin	-Vout	+Vout	-Vin
Dual	+Vin	-Vout	COM	No pin	No pin	No pin	No pin	No pin	No pin	COM	+Vout	-Vin
Pin	13	14	15	16	17	18	19	20	21	22	23	24
Single	-Vin	+Vout	-Vout	No pin	No pin	No pin	No pin	No pin	No pin	NC	-Vout	+Vin
Dual	-Vin	+Vout	COM	No pin	No pin	No pin	No pin	No pin	No pin	-COM	-Vout	+Vin