

2:1 Input Range 2A5DL Series

5Watt DIP24 Package Single Output, 2kVDC Isolation, Operating Temp. -40to +95°C

型名	入力電圧(V) (入力電圧幅 V)	出力電圧(V)	出力電流(mA)	効率(%)	負荷変動率	リップルノイズ
2A5DL-053.3	5 (4.5-9)	3.3	1000	70-78	±0.6% Typ	50mVp-p max
2A5DL-0505		5	1000	76-82		
2A5DL-0509		9	556	76-84		
2A5DL-0512		12	420	76-85		
2A5DL-0515		15	340	77-85		
2A5DL-123.3	12 (9-18)	3.3	1000	70-78		
2A5DL-1205		5	1000	76-82		
2A5DL-1209		9	556	76-84		
2A5DL-1212		12	420	76-85		
2A5DL-1215		15	340	77-85		
2A5DL-243.3	24 (18-36)	3.3	1000	70-78		
2A5DL-2405		5	1000	76-82		
2A5DL-2409		9	556	76-84		
2A5DL-2412		12	420	76-85		
2A5DL-2415		15	340	77-85		
2A5DL-483.3	48 (36-72)	3.3	1000	70-78		
2A5DL-4805		5	1000	76-82		
2A5DL-4809		9	556	76-84		
2A5DL-4812		12	420	76-85		
2A5DL-4815		15	340	77-85		

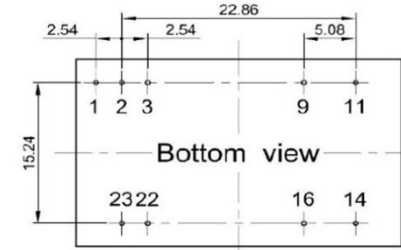
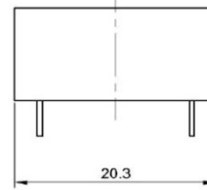
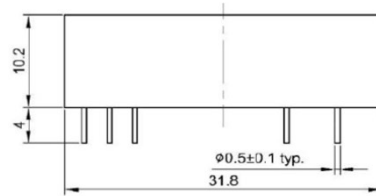
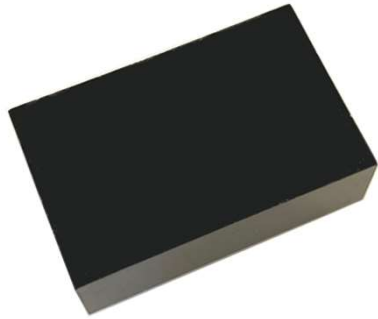
2:1 Input Range 2A5DL Series

5Watt DIP24 Package Dual Output, 2kVDC Isolation, Operating Temp. -40to+95°C

型名	入力電圧(V) (入力電圧幅 V)	出力電圧(V)	出力電流(mA)	効率(%)	負荷変動率	リップルノイズ
2A5DL-0505D	5 (4.5-9)	±5	±500	76-81	±0.6% Typ	50mVp-p max
2A5DL-0509D		±9	±278	76-84		
2A5DL-0512D		±12	±210	76-84		
2A5DL-0515D		±15	±170	77-85		
2A5DL-1205D	12 (9-18)	±5	±500	76-81		
2A5DL-1209D		±9	±278	76-84		
2A5DL-1212D		±12	±210	76-84		
2A5DL-1215D		±15	±170	77-85		
2A5DL-2405D	24 (18-36)	±5	±500	76-81		
2A5DL-2409D		±9	±278	76-84		
2A5DL-2412D		±12	±210	76-84		
2A5DL-2415D		±15	±170	77-85		
2A5DL-4805D	48 (36-72)	±5	±500	76-81		
2A5DL-4809D		±9	±278	76-84		
2A5DL-4812D		±12	±210	76-84		
2A5DL-4815D		±15	±170	77-85		

2:1 Input Range 2A5DL Series

5Watt DIP24 Package Single/Dual Output



ピン配置:A Pinning

CTRL*:Option

Pin	1	2	3	4	5	6	7	8	9	10	11	12
Single	CTRL*	-Vin	-Vin	No pin	No pin	No pin	No pin	No pin	NC	No pin	NC	No pin
Dual	CTRL*	-Vin	-Vin	No pin	No pin	No pin	No pin	No pin	COM	No pin	-Vout	No pin

Pin	13	14	15	16	17	18	19	20	21	22	23	24
Single	No pin	+Vout	No pin	-Vout	No pin	No pin	No pin	No pin	No pin	+Vin	+Vin	No pin
Dual	No pin	+Vout	No pin	COM	No pin	No pin	No pin	No pin	No pin	+Vin	+Vin	No pin